



6 Heating



3 Enclosure heaters

1 HEF series

The HEF range of enclosure heaters has been designed for anticondensation, frost protection and temperature control where control panels and monitoring cabinets are located within zone 1 & 2 (gas). This heater has a low surface temperature and is self-regulating. Mounting of the heater can be in any orientation.

II 2 G Ex e II T4 Gb

Zone 0	✗	Zone 20	✗
Zone 1	✓	Zone 21	✗
Zone 2	✓	Zone 22	✗

LCIE02ATEX6123X

Specifications

Housing	stainless steel
Voltage	230 - 240V AC (single phase)
Connection	integrated cable, 1 meter
Mounting	mounting feet for M6 fixing
Ambiant temperature	-60°C - +80°C



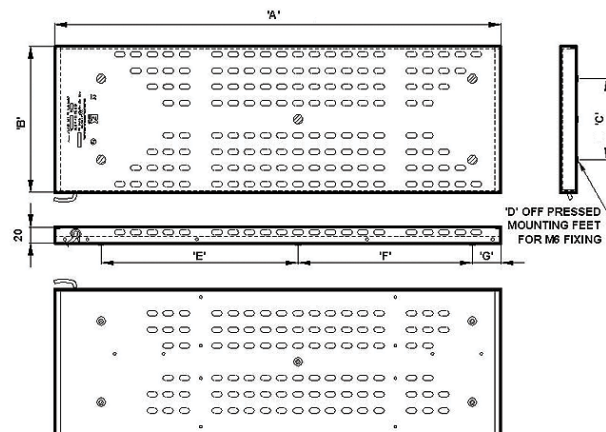
On request

- 110V (single phase)
- longer integrated cable

Ordering data

Code	Power	Weight
HEF30/240	30W	0,7 kg
HEF50/240	50W	1,0 kg
HEF100/240	100W	1,5 kg
HEF200/240	200W	3,0 kg
HEF500/240	500W	6,5 kg

Dimensional sketches



Product code	Dimensions						
	A	B	C	D	E	F	G
HEF30/240	130	73	center	1	N/A	N/A	N/A
HEF50/240	266	100	60	3	N/A	142	22
HEF100/240	290	180	140	4	75	165	50
HEF200/240	550	180	100	5	243	215	35
HEF500/240	700	340	300	5	300	275	50

